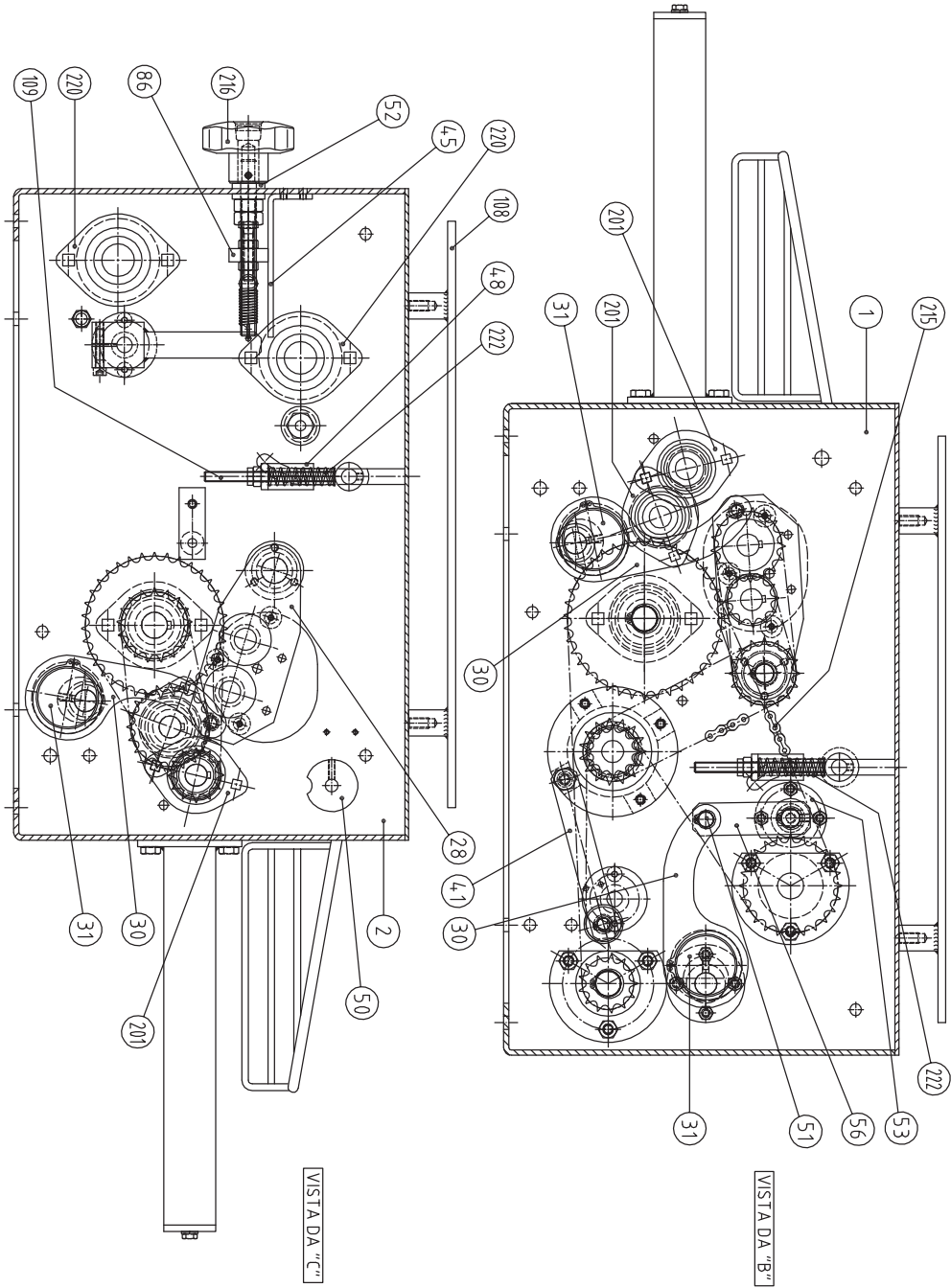
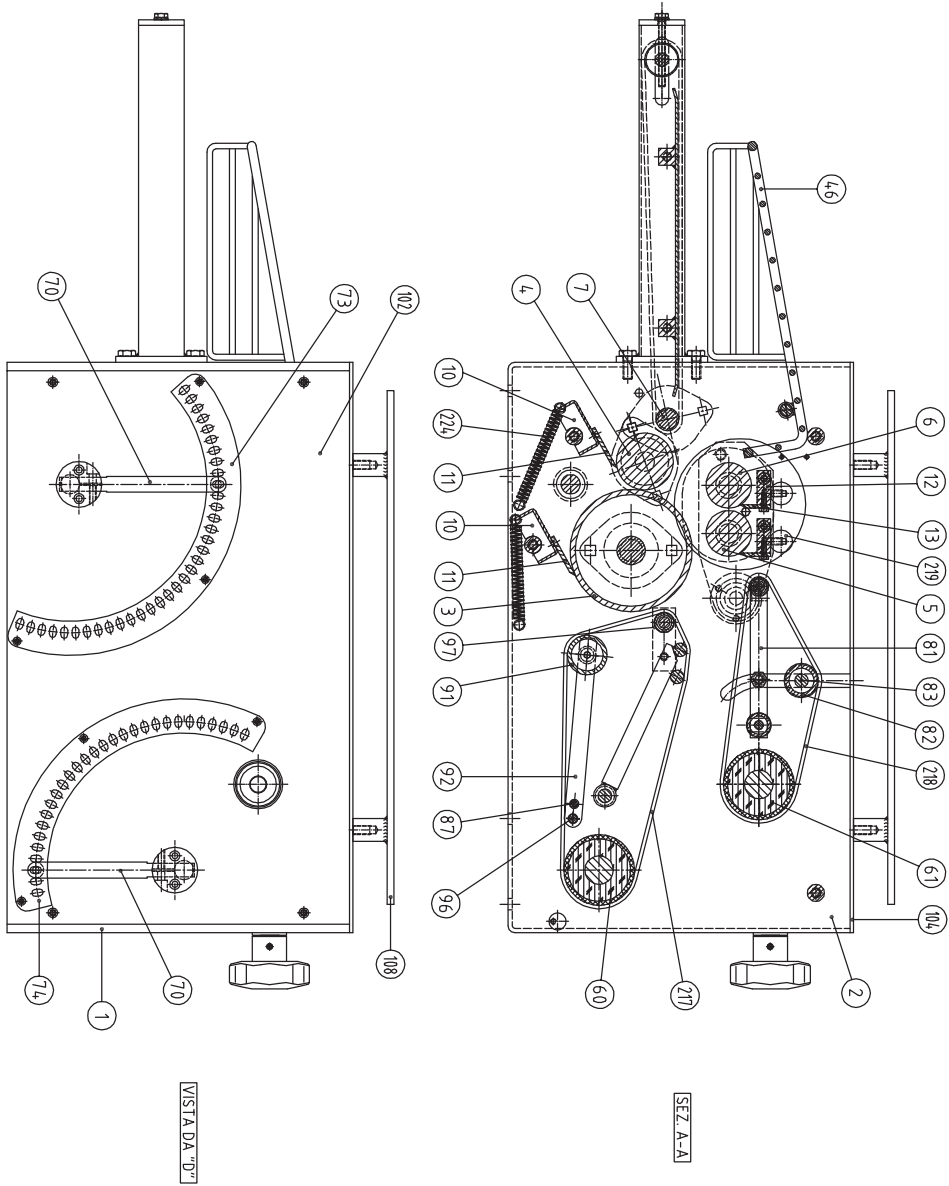
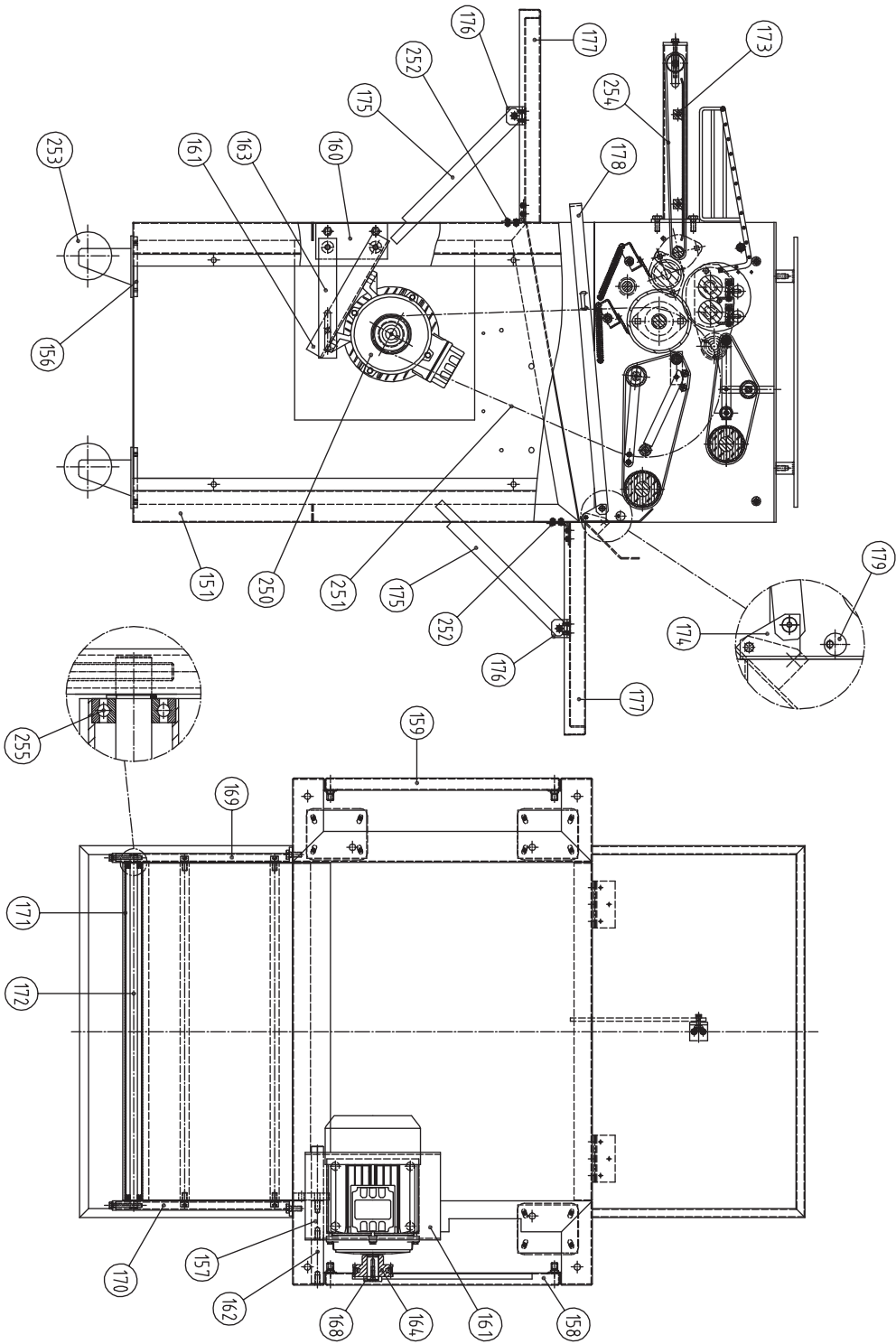


Formatrice a 4 cilindri







Formatrice a 4 cilindri

| MACH. : 4-CYL. MOULDER | | DRAWINGS LIST | GROUP: 02 MOULDER |
|------------------------|------------------|--|-------------------|
| Pos. | Drawing No./Code | NAME | No. Pieces |
| 01 | FO.02.001 | RIGHT SHOULDER - DRIVE SIDE | 1 |
| 02 | FO.02.002 | LEFT SHOULDER - TRANSMISSION SIDE | 1 |
| 03 | FO.02.003 | ROLLER Ø 107 | 1 |
| 04 | FO.02.004 | ROLLER Ø 50 | 1 |
| 05 | FO.02.005 | ROLLER Ø 40 AT OUTFEED | 1 |
| 06 | FO.02.006 | ROLLER Ø 40 AT INFEED | 1 |
| 07 | FO.02.007 | ROLLER Ø 20 | 1 |
| 08 | FO.02.008 | CONNECTING ROD CONTROL SHAFT | 1 |
| 09 | FO.02.009 | SHOULDER JOINT SHAFT | 4 |
| 10 | FO.02.010 | SCRAPER SUPPORT FOR BOTTOM ROLLERS | 2 |
| 11 | FO.02.11 | SCRAPER FOR BOTTOM ROLLERS | 2 |
| 12 | FO.02.12 | SCRAPER SUPPORT FOR TOP ROLLERS | 2 |
| 13 | FO.02.013 | SCRAPER FOR TOP ROLLERS | 2 |
| 14 | FO.02.014 | PINION ON ROLLER Ø 107 – TRANSMISSION SIDE | 1 |
| 15 | FO.02.015 | PINION ON ROLLER Ø 107 – TRANSMISSION SIDE | 1 |
| 16 | FO.02.016 | PINION ON ROLLER Ø 107 – TRANSMISSION SIDE | 1 |
| 17 | FO.02.017 | PINION SPACER ON ROLLERS Ø 107 – TRANSMISSION SIDE | 1 |
| 18 | FO.02.018 | PINION ON ROLLER Ø 50 – TRANSMISSION SIDE | 1 |
| 19 | FO.02.019 | PINION SPACER ON ROLLER Ø 50 – TRANSMISSION SIDE | 1 |
| 20 | FO.02.20 | PINION ON ROLLER Ø 20 – TRANSMISSION SIDE | 1 |
| 21 | FO.02.21 | PINION ON ROLLER Ø 40 – TRANSMISSION SIDE INFEED | 1 |
| 22 | FO.02.22 | PINION SPACER ON ROLLER Ø 40 – TRANSMISSION SIDE INFEED | 1 |
| 23 | FO.02.23 | PINION ON ROLLER Ø 40 – TRANSMISSION SIDE OUTFEED | 1 |
| 24 | FO.02.24 | PINION SPACER ON ROLLER Ø 40 – TRANSMISSION SIDE OUTFEED | 1 |
| 25 | FO.02.25 | PINION ON CONNECTING ROD SUPPORT PIN FOR ROLLERS Ø 40 TRANSM. SIDE | 1 |
| 26 | FO.02.26 | CONNECTING ROD SUPPORT PIN FOR SHAFTS Ø 40 TRANSMISSION SIDE | 1 |
| 27 | FO.02.27 | PIN FOR CONNECTING ROD SUPPORT FOR ROLLERS Ø TRANSM. SIDE | 1 |
| 28 | FO.02.28 | CONNECTING ROD FOR ROLLERS Ø 40 | 2 |
| 29 | FO.02.29 | CONNECTING ROD ATTACHMENT PIN FOR ROLLERS Ø 40 | 2 |
| 30 | FO.02.30 | ROLLER ELEVATION CONNECTING ROD | 4 |
| 31 | FO.02.31 | ECCENTRIC FOR ROLLER ELEVATION CONNECTING ROD | 4 |
| 32 | FO.02.32 | LEFT SAFEGUARD - ROLLERS Ø 40 | 1 |
| 33 | FO.02.33 | RIGHT SAFEGUARD - ROLLERS Ø 40 | 1 |

| MACH. : 4-CYL MOULDER | | DRAWINGS LIST | GROUP: 02 MOULDER |
|-----------------------|------------------|---|-------------------|
| Pos. | Drawing No./Code | NAME | No. Pieces |
| 34 | FO.02.34 | CHAIN TRANSMISSION SUPPORT | 1 |
| 35 | FO.02.35 | COVER FOR CHAIN TRANSMISSION SUPPORT | 1 |
| 36 | FO.02.36 | CHAIN TRANSMISSION SHAFT | 1 |
| 37 | FO.02.37 | TRANSMISSION PINION FOR TRANSMISSION TO ROLLERS Ø 40 | 1 |
| 38 | FO.02.38 | TRANSMISSION PINION FOR BOTTOM CONVEYOR BELT TRANSMISSION | 1 |
| 39 | FO.02.39 | TRANSMISSION PINION FOR TRANSMISSION TO ROLLER Ø 107 | 1 |
| 40 | FO.02.40 | CHAIN TRANSMISSION PINION SPACER | 1 |
| 41 | FO.02.41 | CHAIN TIGHTENER | 1 |
| 42 | FO.02.42 | CHAIN TIGHTENER WHEEL | 1 |
| 43 | FO.02.43 | PIN FOR CHAIN TIGHTENER | 1 |
| 44 | FO.02.44 | MOULDER TRANSMISSION PULLEY | 1 |
| 45 | FO.02.45 | ROTATION PREVENTION PLATE FOR BOTTOM BELT ADJUSTMENT | 1 |
| 46 | FO.02.46 | PIN ON BELT ADJUSTMENT HANDWHEEL | 1 |
| 47 | FO.02.47 | BELT ADJUSTMENT SCREW | 1 |
| 48 | FO.02.48 | BELT ADJUSTMENT LEAD SCREW | 1 |
| 49 | FO.02.49 | BELT ADJUSTMENT FORK | 1 |
| 50 | FO.02.50 | BOTTOM BELT ADJUSTMENT CONNECTING ROD | 1 |
| 51 | FO.02.51 | PIN ON BELT ADJUSTMENT CONNECTING ROD | 2 |
| 52 | FO.02.52 | WASHER ON BOTTOM BELT ADJUSTMENT SCREW | 2 |
| 53 | FO.02.53 | TOP BELT ROTATION PIN SUPPORT | 1 |
| 54 | FO.02.54 | BOTTOM BELT ROTATION PIN | 1 |
| 55 | FO.02.55 | TOP BELT ROTATION PIN | 1 |
| 56 | FO.02.56 | TOP BELT ROTATION CONNECTING ROD | 1 |
| 57 | FO.02.57 | TOP BELT ADJUSTMENT SHAFT SUPPORT | 1 |
| 58 | FO.02.58 | TOP BELT ADJUSTMENT SHAFT | 1 |
| 59 | FO.02.59 | RUBBERISED ROLLERS SUPPORT - BELT DRIVE | 2 |
| 60 | FO.02.60 | BOTTOM BELT DRIVE ROLLER | 1 |
| 61 | FO.02.61 | TOP BELT DRIVE ROLLER | 1 |
| 62 | FO.02.62 | PINION ON RUBBERISED ROLLER – TOP BELT DRIVE | 1 |
| 63 | FO.02.63 | IDLE PULLY SUPPORT SHAFT ON TOP BELT RUBBERISED ROLLER | 1 |
| 64 | FO.02.64 | IDLE PULLY - TOP BELT RUBBERISED ROLLER | 1 |
| 65 | FO.02.65 | IDLE PULLEY BEARINGS SPACER | 1 |
| 66 | FO.02.66 | PINION ON RUBBERISED ROLLER – BOTTOM BELT DRIVE | 1 |

| MACH.: 4-CYL MOULDER | | DRAWINGS LIST | GROUP:02 MOULDER |
|----------------------|------------------|--|------------------|
| Pos. | Drawing No./Code | NAME | No. Pieces |
| 67 | FO.02.67 | SCRAPER SUPPORT PIN FOR ROLLERS Ø 40 | 4 |
| 68 | FO.02.68 | SPACER L = 24.5 FOR ROLLER Ø 20 | 2 |
| 69 | FO.02.69 | SPACER L = 20.5 FOR ROLLER Ø 20 | 2 |
| 70 | FO.02.70 | BELT ADJUSTMENT HANDLE | 2 |
| 71 | FO.02.71 | BELT ADJUSTMENT HANDLE ATTACHMENT - REAR BLOCK | 2 |
| 72 | FO.02.72 | BELT ADJUSTMENT HANDLE ATTACHMENT - FRONT BLOCK | 2 |
| 73 | FO.02.73 | DRILLED PLATE FOR ADJUSTING ROLLERS Ø 40 | 1 |
| 74 | FO.02.74 | DRILLED PLATE FOR ADJUSTING TOP BELT | 1 |
| 75 | FO.02.77 | BELT ROTATION PIN | 1 |
| 76 | FO.02.78 | IDLE ROLLER ON TOP BELT | 1 |
| 77 | FO.02.79 | PIN FOR IDLE ROLLER ON TOP BELT | 1 |
| 78 | FO.02.80 | PUSH BEARING WASHER ON TOP BELT IDLE ROLLER Ø 17 | 2 |
| 79 | FO.02.81 | FRAME FOR TOP BELT | 1 |
| 80 | FO.02.82 | TOP BELT TENSIONING ROLLER | 1 |
| 81 | FO.02.83 | SHAFT FOR TOP BELT TENSIONING ROLLER | 1 |
| 82 | FO.02.84 | LEFT FRAME FOR BOTTOM BELT | 1 |
| 83 | FO.02.85 | RIGHT FRAME FOR BOTTOM BELT | 1 |
| 84 | FO.02.86 | BOTTOM BELT SPRING TENSION PLATE | 1 |
| 85 | FO.02.87 | PIN FOR BOTTOM BELT SWING | 1 |
| 86 | FO.02.88 | LEFT FRAME ROTATION FLANGE FOR BOTTOM BELT | 1 |
| 87 | FO.02.89 | RIGHT FRAME ROTATION FLANGE FOR BOTTOM BELT | 1 |
| 88 | FO.02.90 | FOR BOTTOM BELT ROLLER | 1 |
| 89 | FO.02.91 | ROLLER Ø 35 ON BOTTOM BELT | 1 |
| 90 | FO.02.92 | BOTTOM BELT SWING SIDE PLATE | 2 |
| 91 | FO.02.93 | SPACER FOR BOTTOM BELT FRAME | 1 |
| 92 | FO.02.94 | RIGHT FRAME SWING CONNECTING ROD FOR BOTTOM BELT | 1 |
| 93 | FO.02.95 | LEFT FRAME SWING CONNECTING ROD FOR BOTTOM BELT | 1 |
| 94 | FO.02.96 | OUTER PIN FOR BOTTOM BELT SWING | 1 |
| 95 | FO.02.97 | IDLE ROLLER ON BOTTOM BELT | 1 |
| 96 | FO.02.98 | PIN FOR IDLE ROLLER ON BOTTOM BELT | 1 |
| 97 | FO.02.99 | BEARINGS SPACER BUSH ON BOTTOM BELT ROLLER | 2 |
| 98 | FO.02.100 | IDLE ROLLER SUPPORT ON BOTTOM BELT | 1 |

| | | |
|-----------------------------|----------------------|-------------------------|
| MACH.: 4-CYL MOULDER | DRAWINGS LIST | GROUP:02 MOULDER |
|-----------------------------|----------------------|-------------------------|

| Pos. | Drawing No./Code | NAME | No. Pieces |
|-------------|-------------------------|---|-------------------|
| 99 | FO.02.101 | PUSH BEARING SPACER ON BOTTOM BELT IDLE ROLLER Ø 35 | 2 |
| 100 | FO.02.102 | DRIVE SIDE COVER | 1 |
| 101 | FO.02.103 | TRANSMISSION SIDE COVER | 1 |
| 102 | FO.02.104 | TOP COVER | 2 |
| 103 | FO.02.105 | BELT SWING SHAFT SLIP BUSH | 1 |
| 104 | FO.02.106 | PUSH SPRING PIN FOR BELT ADJUSTMENT HANDLE | 2 |
| 105 | FO.02.107 | BOTTOM BELT ROTATION BUSH | 2 |
| 106 | FO.02.108 | TRAY SUPPORT | 2 |
| 107 | FO.02.109 | TOP BELT-TIGHTENING ROLLER SUPPORT | 2 |
| 108 | FO.02.110 | TOP BELT ROTATION SPACER | 2 |
| | | | |
| | | | |
| | | | |
| | | | |
| | | | |
| | | | |
| | | | |
| | | | |
| | | | |
| | | | |
| | | | |
| | | | |
| | | | |
| | | | |
| | | | |
| | | | |
| | | | |
| | | | |
| | | | |
| | | | |
| | | | |
| | | | |
| | | | |
| | | | |
| | | | |
| | | | |
| | | | |

MADE IN ITALY

| MACH.: 4-CYL. MOULDER | | GOODS FOR SALE | GROUP:02 MOULDER |
|-----------------------|------------------|---|------------------|
| Pos. | Drawing No./Code | NAME | No. Pieces |
| | 200 | OVAL FLANGE SUPPORT IN STEEL PLATE SERIES UBPFL 204 Ø 20 | 2 |
| | 201 | OVAL FLANGE SUPPORT IN STEEL PLATE SERIES UBPFL 203 Ø 17 | 4 |
| | 202 | RIGID RADIAL BEARINGS "SKF" Type 6004 2RSI Ø 20 - Ø 42 - 12 | 4 |
| | 203 | RIGID RADIAL BEARINGS « SKF » Type 6203 2RSI Ø 17 - Ø 40 - 12 | 6 |
| | 204 | RIGID RADIAL BEARINGS « SKF » Type 6002 2RSI Ø 15 - Ø 32 - 9 | 4 |
| | 205 | RIGID RADIAL BEARINGS « SKF » Type 6001 2RSI Ø 12 - Ø 28 - 8 | 4 |
| | 206 | SEALING RINGS FOR ROTATING SHAFTS "A+P" Type DPSM 25427 | 2 |
| | 207 | TRACTION SPRING | 2 |
| | 208 | KEY Type A 6 x 6 x 20 UNI 6604 | 4 |
| | 209 | KEY Type A 6 x 6 x 50 UNI 6604 | 1 |
| | 210 | KEY Type A 5 x 5 x 12 UNI 6604 | 1 |
| | 211 | KEY Type A 5 x 5 x 20 UNI 6604 | 8 |
| | 212 | KEY Type A 5 x 5 x 32 UNI 6604 | 1 |
| | | SEEGER RING FOR SHAFTS Ø 10 | 3 |
| | | SEEGER RING FOR SHAFTS Ø 12 | 4 |
| | | SEEGER RING FOR SHAFTS Ø 15 | 4 |
| | | SEEGER RING FOR SHAFTS Ø 17 | 14 |
| | 213 | BOTTOMLESS ROLLER CASE "INA" Type HK 1010 Ø 10 Ø 14 -10 | 4 |
| | 214 | INNER RINGS "INA" TYPE IR 7 x 10 x 10.5 | 4 |
| | 215 | SIMPLE 3/8 ROLLER CHAIN | 4 m |
| | 216 | LOBE HANDWHEEL HOLE Ø 12 H 7 GRIP Ø 70 | 1 |
| | 217 | FELT BELT DEPTH 3mm, WIDTH 560mm, INTERNAL CIRCUMFERENCE 630 mm | 1 |
| | 218 | FELT BELT DEPTH 3mm, WIDTH 560mm, INTERNAL CIRCUMFERENCE 480 mm | 1 |
| | 219 | SMOOTH BALL GRIP Ø 20 WITH THREADED M6 HOLE | 2 |
| | 220 | OVAL FLANGE SUPPORT IN STEEL PLATE SERIES UBPFL 205 Ø 25 | 2 |
| | 221 | COMPRESSION SPRING Ø WIRE 0.5 Ø 5.5 EXTER. L ₀ = 5 No. 5 TURNS | 1 |
| | 222 | COMPRESSION SPRING | 2 |
| | 223 | COMPRESSION SPRING Ø WIRE 0.5 Ø 12 EXTER. L ₀ = 15 No. 5 TURNS | 2 |
| | | | |
| | | | |
| | | | |

| MACH.: 4-CYL. MOULDER | | DRAWINGS LIST | GROUP:01 STRUCTURE |
|------------------------------|-------------------------|--|---------------------------|
| Pos. | Drawing No./Code | NAME | No. Pieces |
| 151 | FO.01.001 | BASIC MODEL STRUCTURE ASSEMBLY WITH TABLES | 1 |
| 156 | FO.01.006 | WHEEL ATTACHMENT PLATE | 4 |
| 157 | FO.01.007 | MOTOR ATTACHMENT SPACER | 1 |
| 158 | FO.01.008 | TRANSMISSION SIDE DOOR | 1 |
| 159 | FO.01.009 | CONTROL SIDE DOOR | 1 |
| 160 | FO.01.0010 | MOTOR SUPPORT PLATE | 1 |
| 161 | FO.01.0011 | MOTOR SWING | 1 |
| 162 | FO.01.0012 | SHAFT SWING | 1 |
| 163 | FO.01.0013 | MOTOR ATTACHMENT PLATE | 1 |
| 164 | FO.01.0014 | MOTOR PULLEY | 1 |
| 168 | FO.01.0018 | MOTOR PULLEY ATTACHMENT WASHER | 1 |
| 169 | FO.01.0019 | INFEED BELT LEFT SUPPORT | 1 |
| 170 | FO.01.0020 | INFEED BELT RIGHT SUPPORT | 1 |
| 171 | FO.01.0021 | INFEED BELT ROLLER | 1 |
| 172 | FO.01.0022 | PIN FOR INFEED BELT | 1 |
| 173 | FO.01.0023 | INFEED BELT SLIP PLATE | 1 |
| 174 | FO.01.024 | DOUGH RETURN SIDE-PIECE | 1 |
| 175 | FO.01.025 | BRACKET SUPPORT PLATE | 2 |
| 176 | FO.01.026 | BRACKET SUPPORT PLATE ATTACHMENT | 2 |
| 177 | FO.01.027 | BRACKET FOR BELT | 2 |
| 178 | FO.01.028 | DOUGH RETURN SIDE-PIECE ADJUSTMENT LEVER | 1 |
| 179 | FO.01.029 | DOUGH RETURN SIDE-PIECE ADJUSTMENT CAM | 1 |
| | | | |
| | | | |
| | | | |
| | | | |
| | | | |
| | | | |
| | | | |
| | | | |
| | | | |
| | | | |
| | | | |
| | | | |
| | | | |
| | | | |
| | | | |

MADE IN ITALY

| MACH.: 4-CYL. MOULDER | | GOODS FOR SALE | GROUP:01 STRUCTURE |
|-----------------------|------------------|---|--------------------|
| Pos. | Drawing No./Code | NAME | No. Pieces |
| | 250 | MOTOR 0.55 K SIZE 80 SHAPE B3 WITH FEET DRIVE SHAFT Ø 19, 6 POLES V= 230/400 50 HZ n.g. 800 (VERIFY) | 1 |
| | 251 | V-BELT SECT. A CIRCUMFERENCE 1550 TYPE A-58 | 1 |
| | 252 | HINGES | 4 |
| | 253 | ROTARY WHEELS Ø 80 H=115 | 4 |
| | 254 | FELT BELT INTERNAL CIRCUMFERENCE 710 mm, WIDTH 562, DEPTH 3 | 1 |
| | 255 | RIGID RADIAL BALL BEARINGS TYPE 6001 -2RS1 Ø 12 - Ø 28 - 8 | 2 |
| | | SEEGER RINGS FOR SHAFT Ø 12 | 2 |
| | | | |
| | | | |
| | | | |
| | | | |
| | | | |
| | | | |
| | | | |
| | | | |
| | | | |
| | | | |
| | | | |
| | | | |
| | | | |
| | | | |
| | | | |
| | | | |
| | | | |
| | | | |
| | | | |
| | | | |
| | | | |
| | | | |
| | | | |