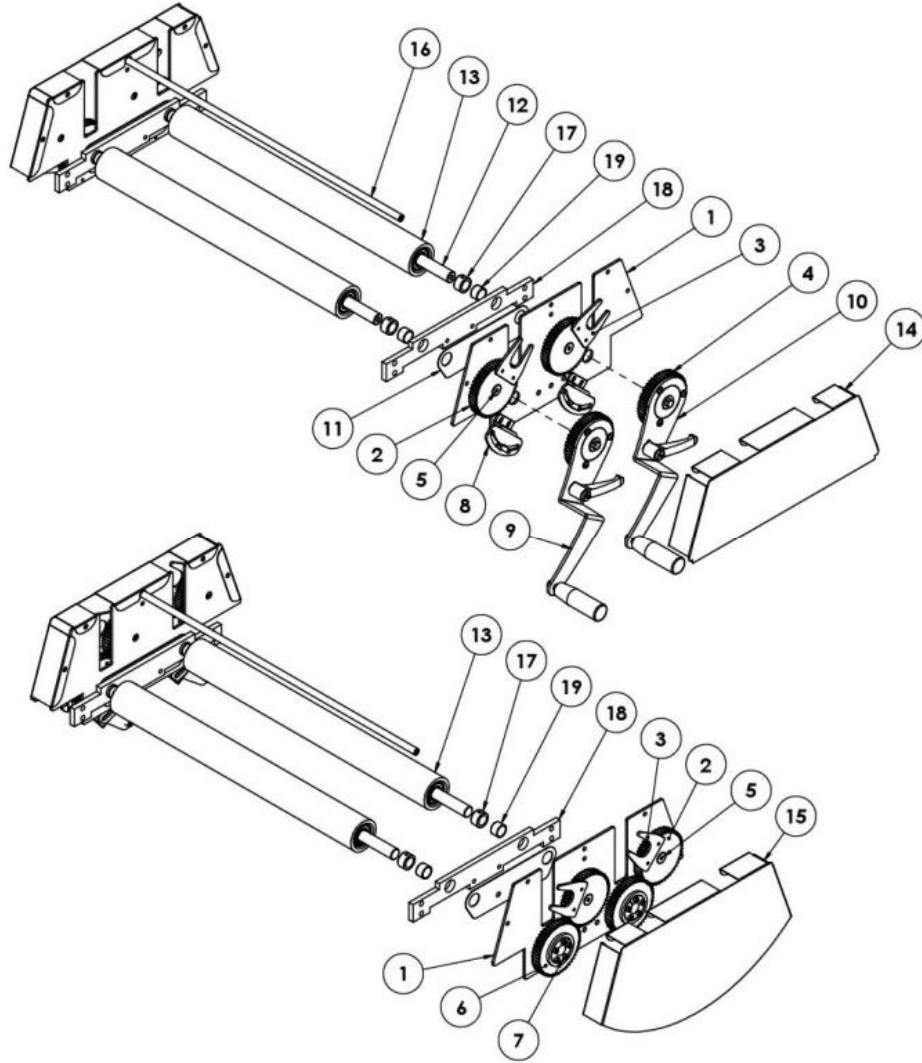


# SPARE PARTS

## 11.1 CUTTING DEVICE SPARE PARTS

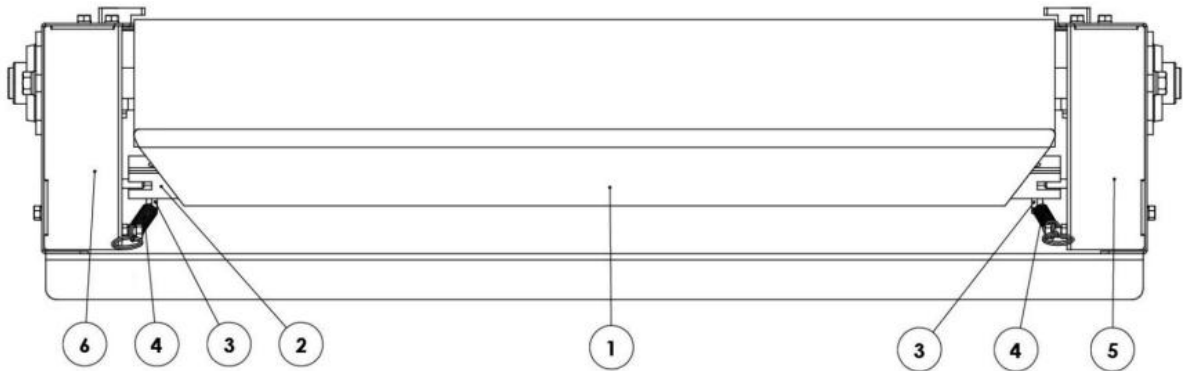
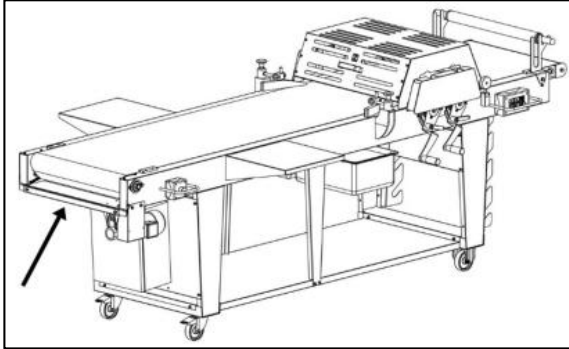


N°	CODE	DESCRIPTION
1	LDT001000	PLATE
2	ZPIS0010000	GEAR
3	LDT001001	PRESSOR
4	ZPIS0010001	GEAR
5	ZPTS000004	PIN
6	ZPIS0010002	GEAR
7	TCS002145	SHRINK DISK
8	ZLDT601002	SECTOR
9	ZLDT001003L	PRESSOR
10	ZLDT001003LS	PRESSOR

N°	CODE	DESCRIPTION
11	ZSFLT00000	PLATE SHIM
12	ZTDS101123	IDLER ROLLER SHAFT
13	TCS601057	COUNTER-MOLD
14	ZCPS601006ISS	LEFT SIDE
15	ZCPS601006IDD	RIGHT SIDE
16	ZTDT001014	SPACER
17	ZTBS001085	BUSHING
18	LDT001004	SUPPORT
19	ZTBF005001	BUSHING GLYCODUR

# SPARE PARTS

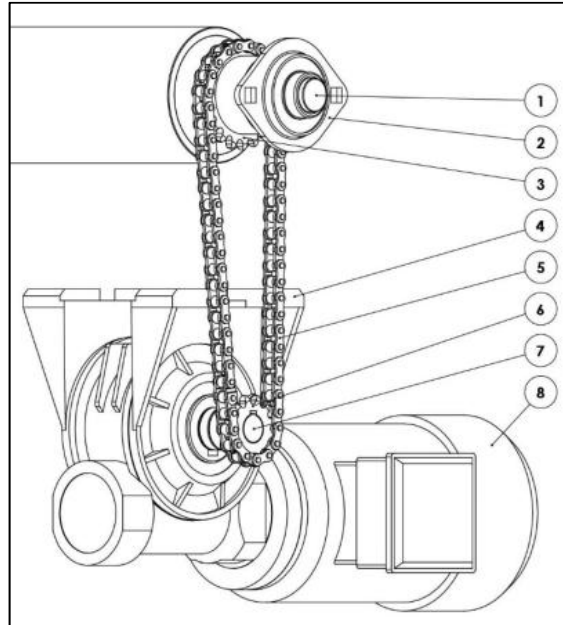
## 11.2 SCRAPER SPARE PARTS



N°	CODE	DESCRIPTION
1	ZFCT001012	SCRAPER
2	ZSFT001013	SCRAPER SUPPORT
3	ZTPF001041	TIE ROD PIN
4	SHE50B080S	SPRING
5	ZLCT001020I	SIDE CARTER LF
6	ZLCT001021I	SIDE CARTER RG

# SPARE PARTS

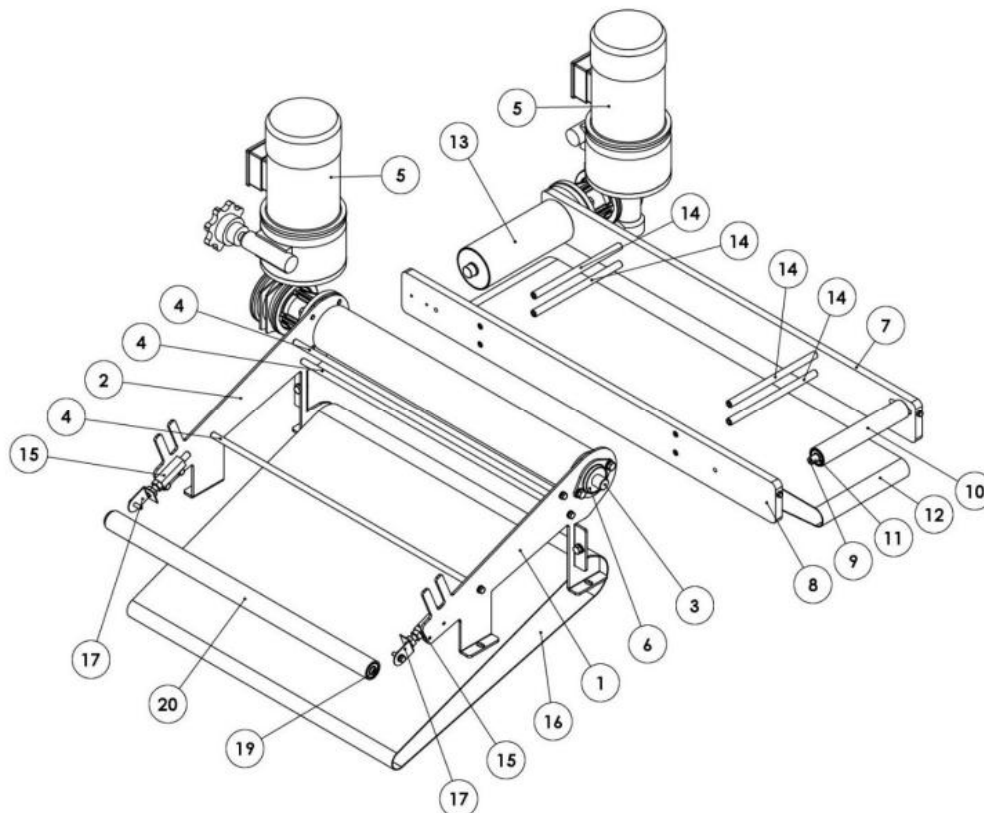
## 11.3 MOVEMENT SPARE PARTS



N°	CODE	DESCRIPTION
1	ZTAT001054	BELT TOWING ROLLER
2	ZTCT002901	SUPPORT
3	ZTPA001044	PINION
4	ZRIDTAVINV	TABLE REDUCER WITH INVERTER
	ZRIDTAVMEC	TABLE REDUCER WITH MECHANICAL VARIATOR
5	ZTCT001041	CHAIN
6	ZTPT002092	REDUCER PINION
7	ZTAT001007	REDUCER SHAFT OF TOWING ROLLER
8	ZGC500100	MOTOR FOR TABLE UP TO 3 m
	ZGC500103	MOTOR FOR TABLE 3.5 m UP

# SPARE PARTS

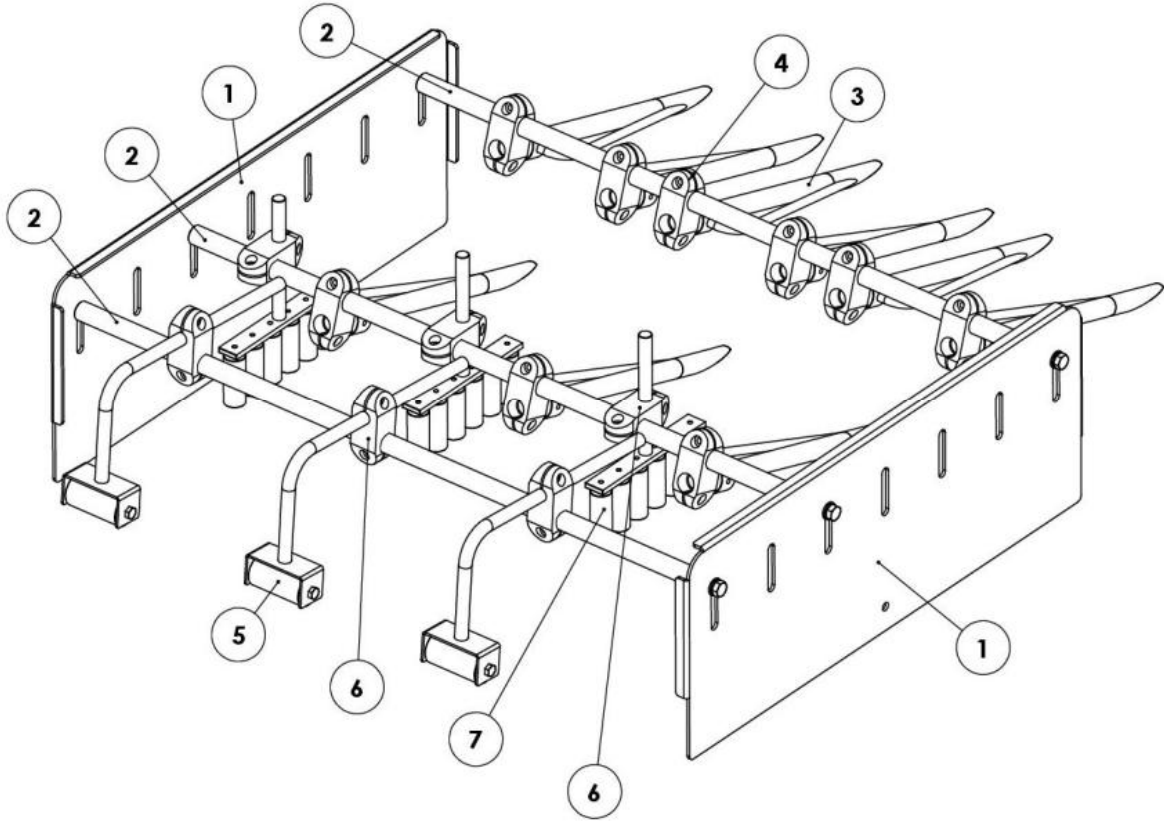
## 11.4 SCRAPS COLLECTION BELT SPARE PARTS



N°	CODE	DESCRIPTION
1	ZLFT01011SI	LEFT SIDE
2	ZLFT01010DI	RIGHT SIDE
3	ZTAT001006	TOWING ROLLER
4	ZTDT001001	SPACER
5	ZTRS008	MOTOVARIATOR
6	ZTCT002091	SUPPORT
7	ZTRS007	RG LONGERON
8	ZTRS006	LF LONGERON
9	ZTRS000	LONGITUDINAL BELT TENSIONER
10	ZTRS001	LONGITUDINAL BELT IDLER ROLLER
11	ZTCS602131	BEARING
12	ZNAT001014	CONVEYOR BELT
13	ZTRS003	LONGITUDINAL BELT TOWING CYLINDER
14	ZTRS002	LONGITUDINAL LONGERON
15	ZABF01300	BAR SUPPORT BLOCK
16	ZNAT001013	CONVEYOR BELT
17	ZSTLA01000	CONV.BELT TIE ROD SUPPORT
18	ZTST001005	SHIM WASHER
19	ZTAT001041	SHAFT FOR IDLER ROLLER
20	ZTRT001040	IDLER ROLLER

# SPARE PARTS

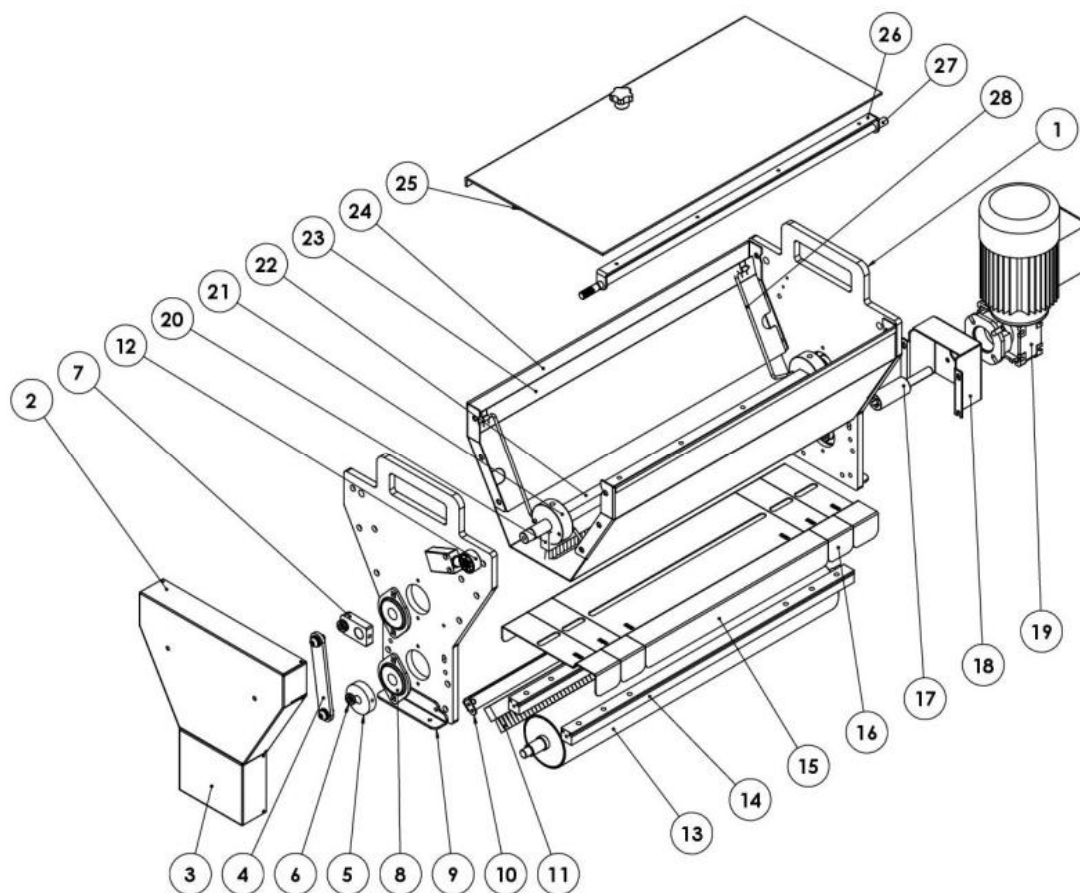
## 11.5 PLOUGHSHARE STATION SPARE PARTS



N°	CODE	DESCRIPTION
1	ZLSVMTT0	PLOUGHSHARE SUPPORT PLATE
2	ZTLV5104	SUPPORT ROD
3	ZTLV5000	PLOUGHSHARE
4	ZTLC0003	CLAMP
5	ZTLV5108	PLOUGHSHARE PRESSER
6	ZTLC0002	CLAMP
7	ZTLV5111	DOUGH ROLLER ALIGNER

# SPARE PARTS

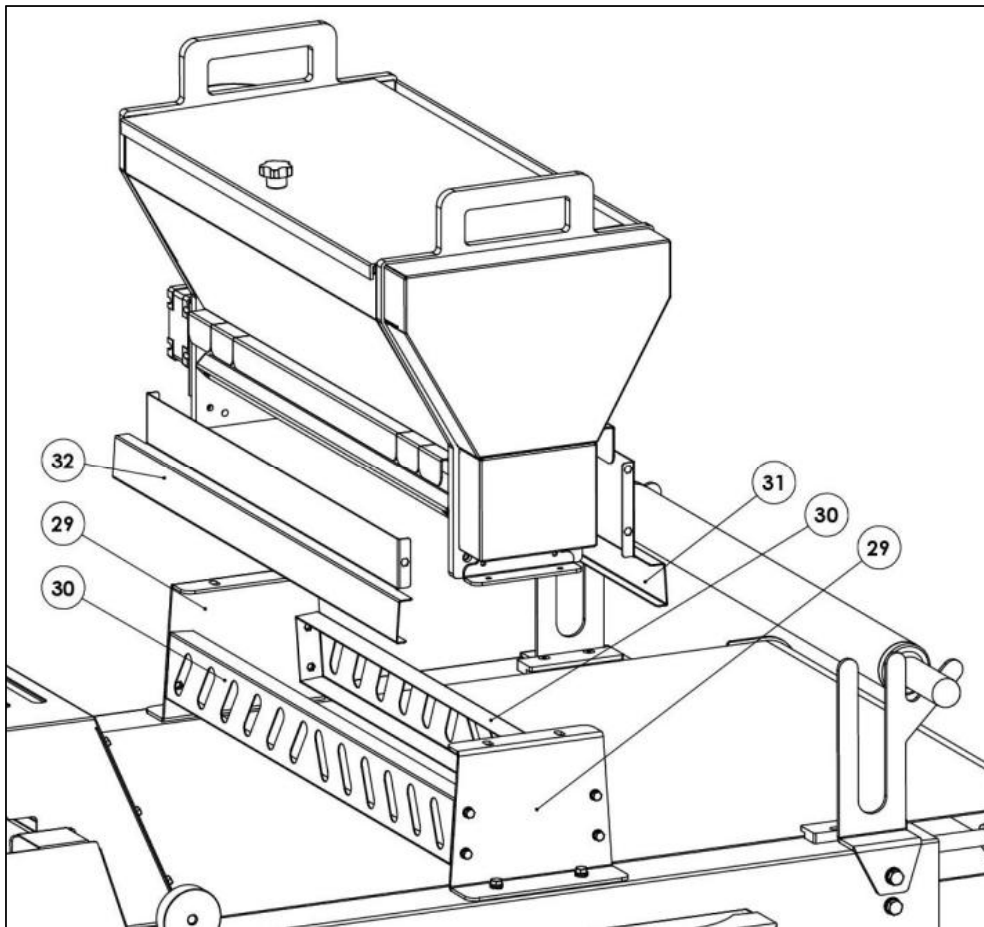
## 11.6 FLOUR DUSTER SPARE PARTS



N°	CODE	DESCRIPTION
1	ZSF650A1014	SIDE
2	ZSF650A1020	COVER CASING
3	ZSF650A1021	LOWER CARTER
4	ZSF650A023	CONNECTING ROD
5	ZSF650A029	HANDWHEEL BRISTLE SPATULA
6	SHE650A124	BEARING
7	ZSF650A031	FLOUR DUSTER CONNECTING ROD
8	ZSBPFL01100	SUPPORT SBPFL203
9	ZSF650AST2	FIXING ANGULAR
10	ZSF650A1008	SUPPORT FOR BRISTLE SPATULA
11	ZSF650A1016	BRISTLE SPATULA ON ROLLER
12	ZFCS001040A	MICROSWITCH CAM
13	ZSF650A908	ALUMINIUM FLOUR BREAKER ROLLER
14	ZSF650A1003	FLOUR DUSTER SQUARE PROFILE

N°	CODE	DESCRIPTION
15	ZSF650A1002	FLOUR FLOW SHEET
16	ZSF650A1001	FLOUR FLOW SHEET
17	ZLTT0001	PIN FOR REDUCER
18	SF650300	SUPPORT SHEET
19	ZSF650A077	GEAR MOTOR
20	ZSF650A1007	BRISTLE SPATULA FOR INTERNAL FLOW
21	ZSF650A1006	SHEET SHAKER SUPPORT
22	ZSF650A1005	BRISTLE SPATULA SUPPORT SHAFT
23	ZSF650A1010	FLOUR BREAKER SHEET
24	ZSF650A1000	FLOUR CONTAINER SHEET
25	ZSF650A1013	FLOUR DUSTER PROTECTION
26	ZSF650A1015	PROTECTION SUPPORT LINE
27	ZSF650A1012	PROTECTION ROD
28	ZSF650A1017	ROUND FOR FLOUR-BREAKING SHEET

# SPARE PARTS



N°	CODE	DESCRIPTION
29	ZTLV004	FLOUR DUSTER SUPPORT SHEET
30	ZTLV003	LOWER DUSTER SUPPORT COVER
31	ZTLV002	DUSTER SUPPORT COVER RG
32	ZTLV001	DUSTER SUPPORT COVER LF