

10 Technical documentation.

10.1 Spare parts

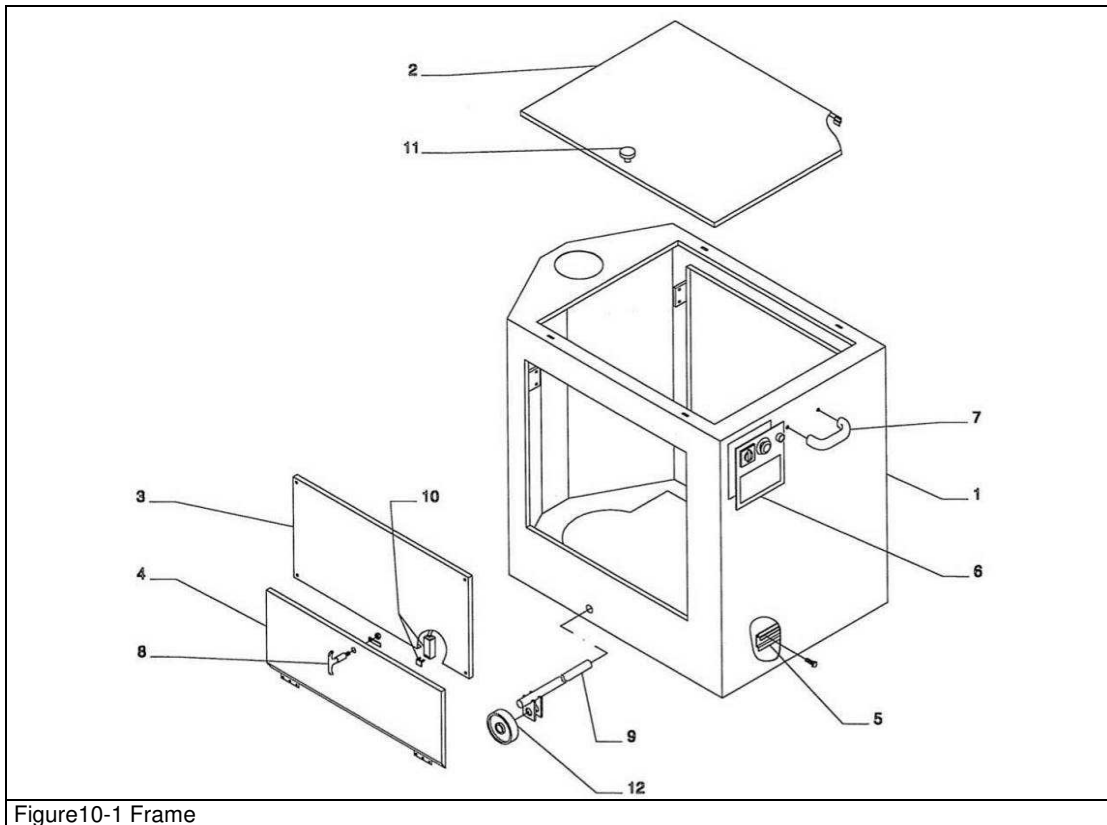


Figure10-1 Frame

Table 14: List of components – Frame		
Reference	Quantity	Name
1	1	Structure / Base
2	1	Top door
3	2	Side cover
4	2	Side door
5	1	Motor support
6	1	Control panel
7	1	Handle
8	1	Side door handle (for locking)
9	1	Wheel axle
10	1	Bayonet stop
11	1	Plastic knob
12	2	Wheels

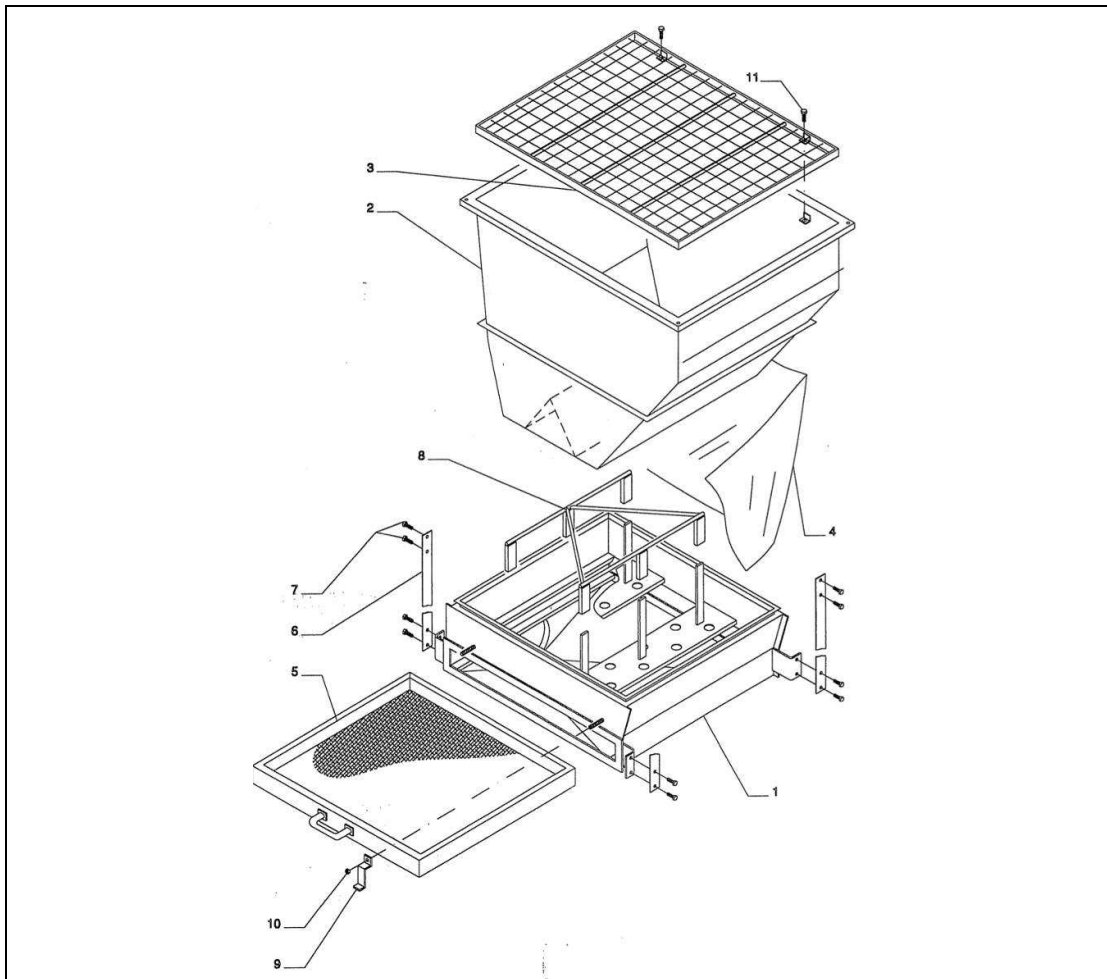


Figure10-2 Sieve unit

Table 15: List of components - Sieve unit		
Reference	Quantity	Name
1	1	Sieve
2	1	Hopper
3	1	Grid
4	1	Large canvas sleeve
5	1	Drawer
6	4	Leaf spring
7	16	Screw M 6 x 20
8	1	"Flour breaking" grill
9	4	Latch
10	4	Nut M 8
11	4	Self-tapping screw

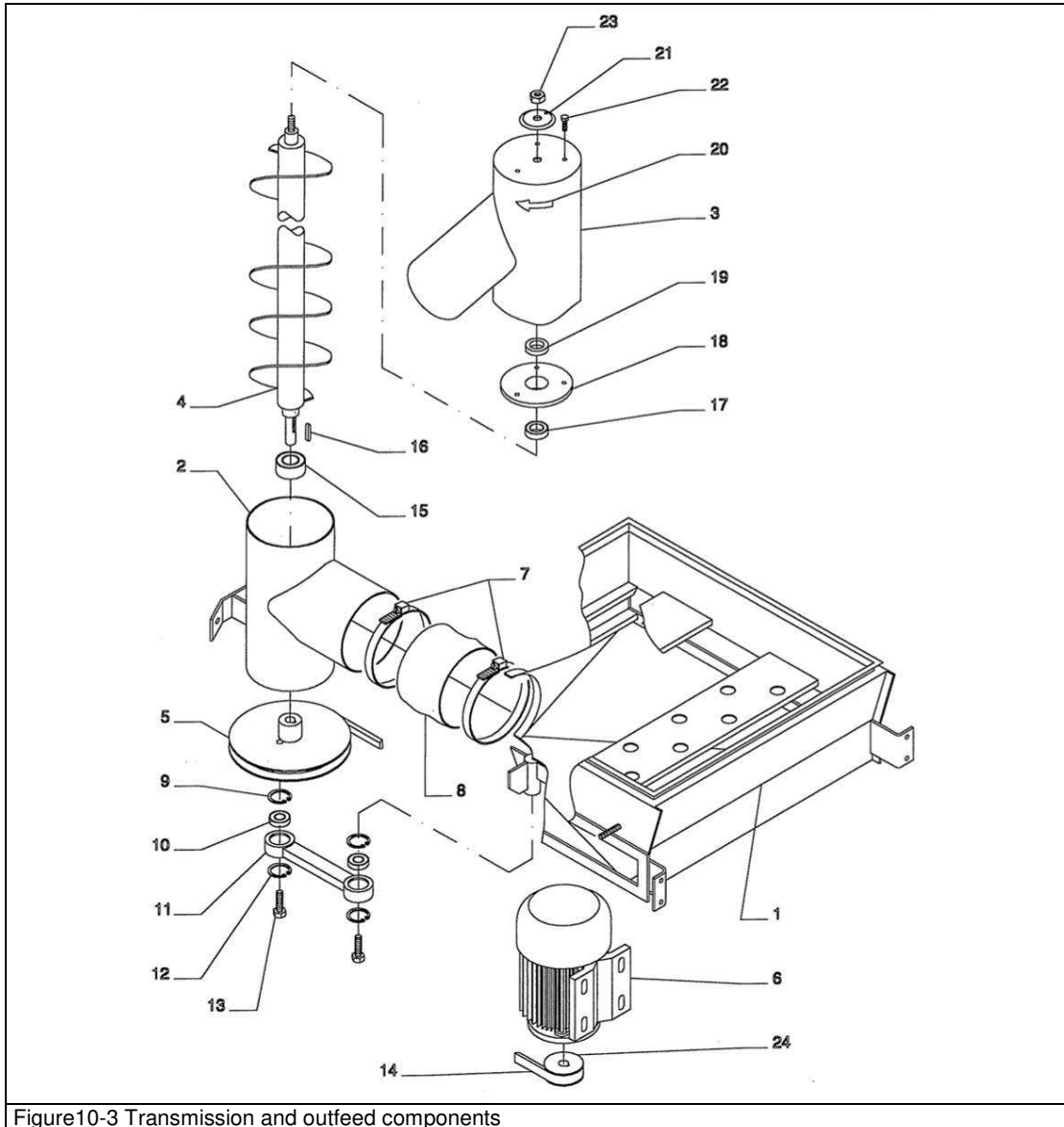


Figure10-3 Transmission and outfeed components

Table 16: List of components - Transmission and outfeed components		
Reference	Quantity	Name
1	1	Sieve
2	1	Bottom flour outfeed tube
3	1	Top flour outfeed tube
4	1	Auger
5	1	Auger pulley
6	1	Motor
7	2	Pipe clamp
8	1	Small canvas sleeve for auger
9	2	Seeger ring
10	2	Bearing
11	1	Rod
12	2	Seeger ring
13	2	Screw M 10 x 45 (partial thread)
14	1	Trapezoidal belt
15	1	Auger bearing
16	1	Auger key
17	1	Auger bearing
18	1	Aluminum flange
19	1	Spacer
20	1	Auger direction rotation arrow
21	1	Indicator disc
22	3	Screw M 6 x 20
23	1	Self-locking nut M 8
24	1	Motor pulley